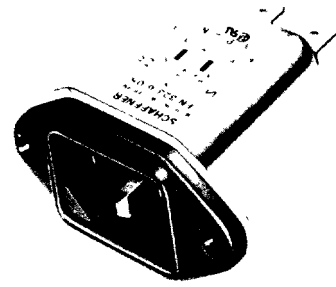


FN 323



IEC plug
Compact size
General equipment protection
Up to 10 A maximum
B-version: for medical equipment



Applications: where small filter size is required

FN 323	Rated current A		Leakage current 220V/50Hz	Inductance mH	Connections		Weight g	
	40°C	25°C			Input	Output		
♥ FN 323-1/01	1	12	2 x 0.21 mA	2.8	IEC 320 C14	soldering lug	40	X X X X X X X
♥ FN 323-1/05	1	12	2 x 0.21 mA	2.8	IEC 320 C14	fast-on 6.3 x 0.8	40	X X X X X X X
♥ FN 323-3/01	3	3.6	2 x 0.21 mA	0.75	IEC 320 C14	soldering lug	40	X X X X X X X
♥ FN 323-3/05	3	3.6	2 x 0.21 mA	0.75	IEC 320 C14	fast-on 6.3 x 0.8	40	X X X X X X X
♥ FN 323-6/01	6	7.3	2 x 0.21 mA	0.3	IEC 320 C14	soldering lug	40	X X X X X X X
♥ FN 323-6/05	6	7.3	2 x 0.21 mA	0.3	IEC 320 C14	fast-on 6.3 x 0.8	40	X X X X X X X
♥ FN 323-10/01	10	12	2 x 0.21 mA	0.16	IEC 320 C14	soldering lug	40	X X X X X O X
♥ FN 323-10/05	10	12	2 x 0.21 mA	0.16	IEC 320 C14	fast-on 6.3 x 0.8	40	X O X X X O X

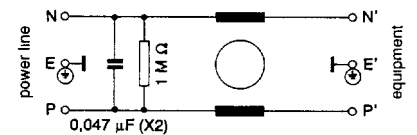
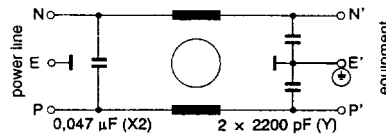
FN 323B

FN 323B-1/01	1	12	2 x 2 µA	2.8	IEC 320 C14	soldering lug	45	X X X X X O X
FN 323B-1/05	1	12	2 x 2 µA	2.8	IEC 320 C14	fast-on 6.3 x 0.8	45	X X X X X O X
♥ FN 323B-3/01	3	3.6	2 x 2 µA	0.75	IEC 320 C14	soldering lug	45	X X X X X O X
FN 323B-3/05	3	3.6	2 x 2 µA	0.75	IEC 320 C14	fast-on 6.3 x 0.8	45	X X X X X O X
FN 323B-6/01	6	7.3	2 x 2 µA	0.3	IEC 320 C14	soldering lug	45	X X X X X O X
FN 323B-6/05	6	7.3	2 x 2 µA	0.3	IEC 320 C14	fast-on 6.3 x 0.8	45	X X X X X O X
FN 323B-10/01	10	12	2 x 2 µA	0.16	IEC 320 C14	soldering lug	45	X X X X X O X
FN 323B-10/05	10	12	2 x 2 µA	0.16	IEC 320 C14	fast-on 6.3 x 0.8	45	X X X X X O X

♥ stock types

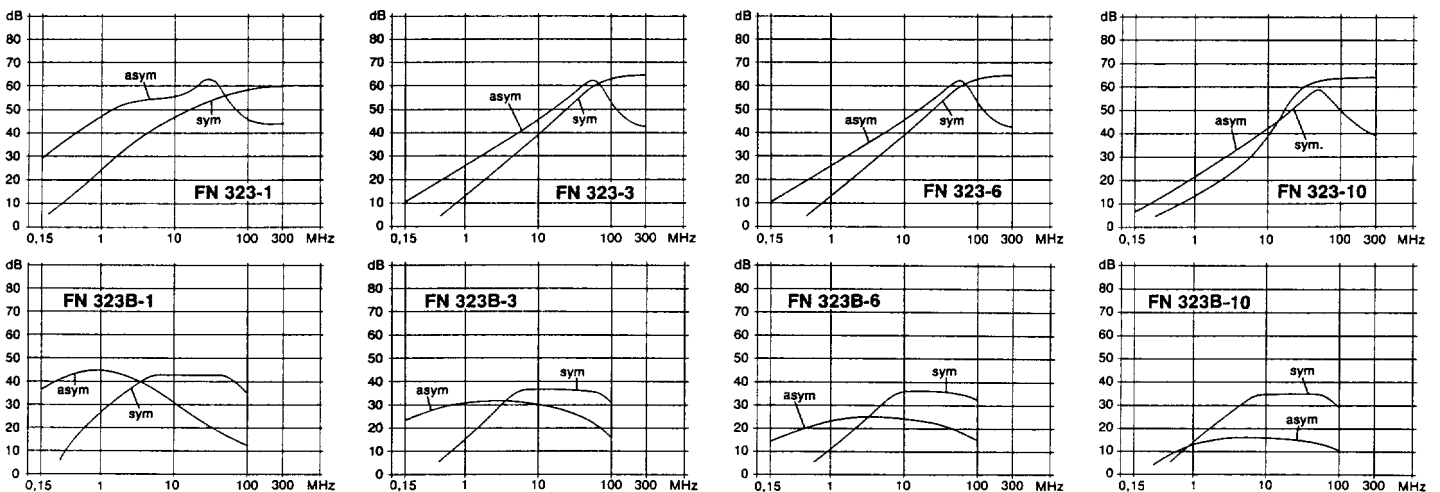
X = approved O = not approved
 * with 6 A approved

Operating voltage 250 V max.
 Operating frequency DC to 400 Hz max.
 Temperature range - 25°C to + 85°C
 Test voltage P/N → E 2 kV/50 Hz

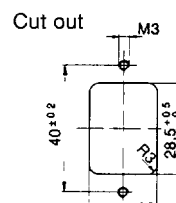
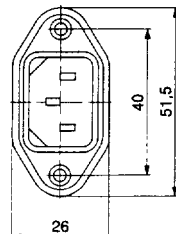
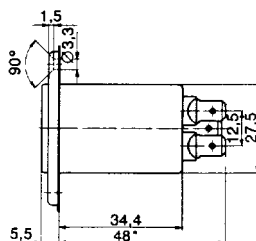


For further information, see general part.

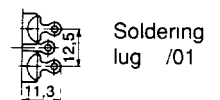
Insertion loss



Dimensions



Alternative connections



* with soldering lug 46